



HAZMAT HOTLINE 1-800-641-5005

***Subject: Important Propane Safety Guidelines After Flooding***

Flooding can pose significant risks to propane systems, so it's crucial to take necessary precautions to safeguard yourselves and your community.

**Propane Safety After Flooding:**

a. Professional Inspection:

- Only rely on trained and qualified professionals to assess, repair, and restart propane systems after a flood.
- Do not attempt to turn on or operate any propane equipment until it has been inspected and deemed safe by a professional.

b. Tank Inspection:

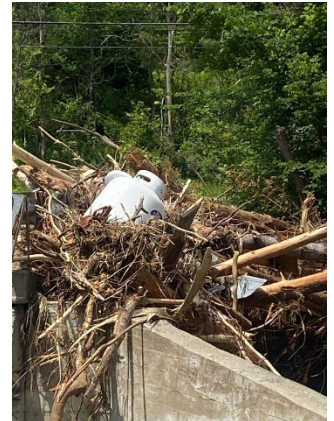
- Inspect propane tanks for visible damage, such as dents, cracks, or signs of leaks.
- Report any suspected damage to the appropriate authorities.

c. Ventilation:

- Ensure proper ventilation of buildings or enclosed areas that may have been affected by flooding to dissipate any accumulated propane gas.

d. Recovery of Unidentified LP tanks:

- Collect the location and Collect the Serial Number which is found on the data plate. Report this information to the local authorities.
- if the tank is labeled contact the company to pick up the tank.



Remember, propane safety is everyone's responsibility. By following these guidelines, you can help protect yourself and your community from potential hazards during and after flooding events. If you have any doubts or concerns, do not hesitate to reach out to local authorities or propane service providers for assistance.

Vermont State Hazmat team  
Chief, VT State Hazmat  
Patrick McLaughlin